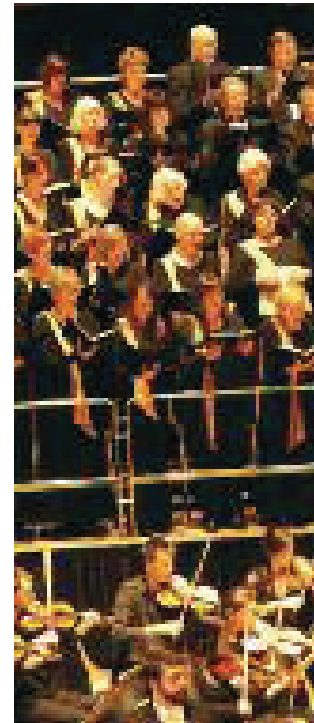


Sheffield Philharmonic Chorus

2009-2010 Season

at Sheffield City Hall



Patron: Samuel West

Music Director: Darius Battiwalla

The Joys of Singing

If you want to know what it is like to sing alongside 200 men and women of all sorts of ages and from all sorts of backgrounds who have one thing in common – a passion for singing – then look no further than the Sheffield Philharmonic Chorus.



We are one of the country's foremost large-scale classical choruses, privileged to sing works from wonderful choral repertoire, both mainstream and lesser known, performing with world class orchestras, renowned conductors and top soloists. We also periodically make recordings for the BBC and Chandos Records.

Our concerts take place in Sheffield's magnificent 1930s art deco classical concert hall, the City Hall. We sometimes also sing in Manchester's Bridgewater Hall and Birmingham's Symphony Hall.

www.sheffieldphil.org

Singing in a big choir is a fantastic experience – it is uplifting emotionally and mentally, and it is a great way to keep in shape! Singing in a Chorus of our status, working with top professionals, enhances both musicianship and vocal ability.



It's also a way of meeting new friends. Many of us socialise after rehearsals over drinks in The University Arms nearby, and there's usually a bottle of wine or two to be shared on the coach on the way home from an 'out-of-town' rehearsal or concert!



Would You Like To Join Us?

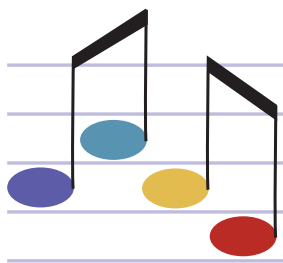
We welcome new members in all voice parts. Come to rehearsals for a few weeks to try us out. When you feel you are ready, we'll arrange a short audition for you.

We are a self-financing organisation so we pay an annual subscription to cover professional costs such as music direction, accompaniment, voice coaching, room hire. Concessions for students and others are available. It is worth every penny for the enjoyment one receives in return.

The 2009-10 season runs from September to May. We rehearse from 7pm to 9pm each Tuesday in the Arts Tower of Sheffield University. We are on main tram and bus routes and there is parking for car users. If you'd like to come along, give Sally a ring on 01433 630970/07771 578233 or contact her via the website: www.sheffieldphil.org. Or just turn up!



www.sheffieldphil.org



Sheffield Philharmonic Chorus

2009-2010 Season

at Sheffield City Hall



Friday 27 November 2009 (City Hall)

Haydn's Creation

Manchester Camerata

Paul Brough conductor

Kate Valentine soprano

Thomas Hobbs tenor

Andrew Rupp bass

Tickets: £15 (all seats)

Saturday 12 December 2009 (City Hall)

Christmas Concert*

Black Dyke Band, Nicholas Child

Darius Battiwalla

Ian McMillan compère

* recorded for Radio 2

Tickets: £16-£27.50 (Children: £10, Family: £65)

Sunday 18 April 2010 (Symphony Hall, Birmingham)

Karl Jenkins' The Armed Man – A Mass for Peace*

Black Dyke Band, Nicholas Child

With Halifax Choral Society & Leeds Met University Choir

* live recording for release on DVD

Saturday 8 May 2010 (City Hall)

Brahms' German Requiem

Hallé Orchestra

Ewa Strusinska conductor

Amy Freston soprano

David Stout baritone

Tickets: £15 (all seats)

City Hall Box Office: 0114 789789 / www.sheffieldcityhall.co.uk

www.sheffieldphil.org



Quotes:



“Sheffield is a place with a proud history of choral singing. As a fan of the city, as a past collaborator with the choir who hopes to work with them again, and as a human being who believes that singing great music together makes life better, I am delighted to become Patron of the Philharmonic Chorus”

Samuel West, actor and director,
Patron of the Chorus

“I was really impressed with their sound, commitment and flexibility and it was a great pleasure for me to work with them.”

Philip Ellis, conductor of the Lesley Garrett Gala Concert

“The Sheffield Philharmonic Chorus, directed, coaxed, perhaps even inspired by the conductor Nicholas Kraemer excelled themselves in the accuracy, power and expression of their singing.”

Sheffield Telegraph, *Elijah*, March 2009